



AL-BAHA MAINTENANCE PROGRAM

Enhancing Operations Through Preventive & Predictive Maintenance

PRESENTED BY

Eng. Haroon Al-Gaood, Maintenance Engineer

DATE

JANUARY 02, 2025

ABOUT AL-BAHA

COMPANY OVERVIEW

Established in 2006, in Zarqa,
Jordan.



MISSION

We are committed to producing **high-quality, eco-friendly chemical products** using the **latest technologies**.



INDUSTRY LEADER

One of the largest producer of **Caustic Soda** and **Chlorine** in the MENA region.

COMPANY PLANTS



OUR PRODUCTS

CAUSTIC SODA



Used in detergents, water treatment, aluminum production, paints, ceramics, and more. With different concentrations (32%, 50% and flake 98%).

KEY APPLICATIONS:

- Detergent Industry.
- Water Treatment.
- Non-organic Chemicals Like Paints, Glass, Ceramics And Make-up.
- Food Industry.
- Aluminum Industry.



CHLORINE



Applied in water purification, sewage treatment, PVC production, and pharmaceuticals.

KEY APPLICATIONS:

- Water Purification.
- Sewage And Industrial Effluent Treatment.
- In The PVC Industry (Polyvinyl Chloride).
- Pharmaceutical Industry.



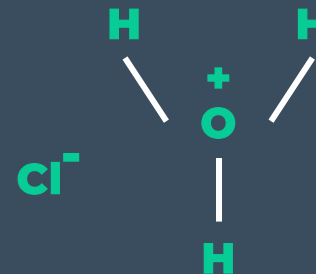
HYDROCHLORIC ACID



Key in steel, oil wells, and pharmaceutical industries.

KEY APPLICATIONS:

- Chloride Production.
- Steel Industry.
- Oil Wells In The Stages Of Drilling And Production.
- Pharmaceutical Industry.



SODIUMHYPOCHLORITE



Used for sanitizers, disinfectants, and food industry applications.

KEY APPLICATIONS:

- Sanitizers And Detergents Industry.
- Sterilization As Bleach And Disinfectant.
- Food Industry.
- Glass Industry.
- Paper Industry.



OUR PRODUCTION CAPACITY



CAUSTIC SODA

93 Tons Per Day.



LIQUID CHLORINE

26,000 Tons Annually.



ADVANCED TECHNOLOGY

Bipolar Membrane Electrolysis
For Eco-friendly And Efficient
Production.



MAINTENANCE INCENTIVE PROGRAM



OBJECTIVE

Ensure continuous, efficient operations by downtime and preventing equipment failure.

PREVENTIVE MAINTENANCE

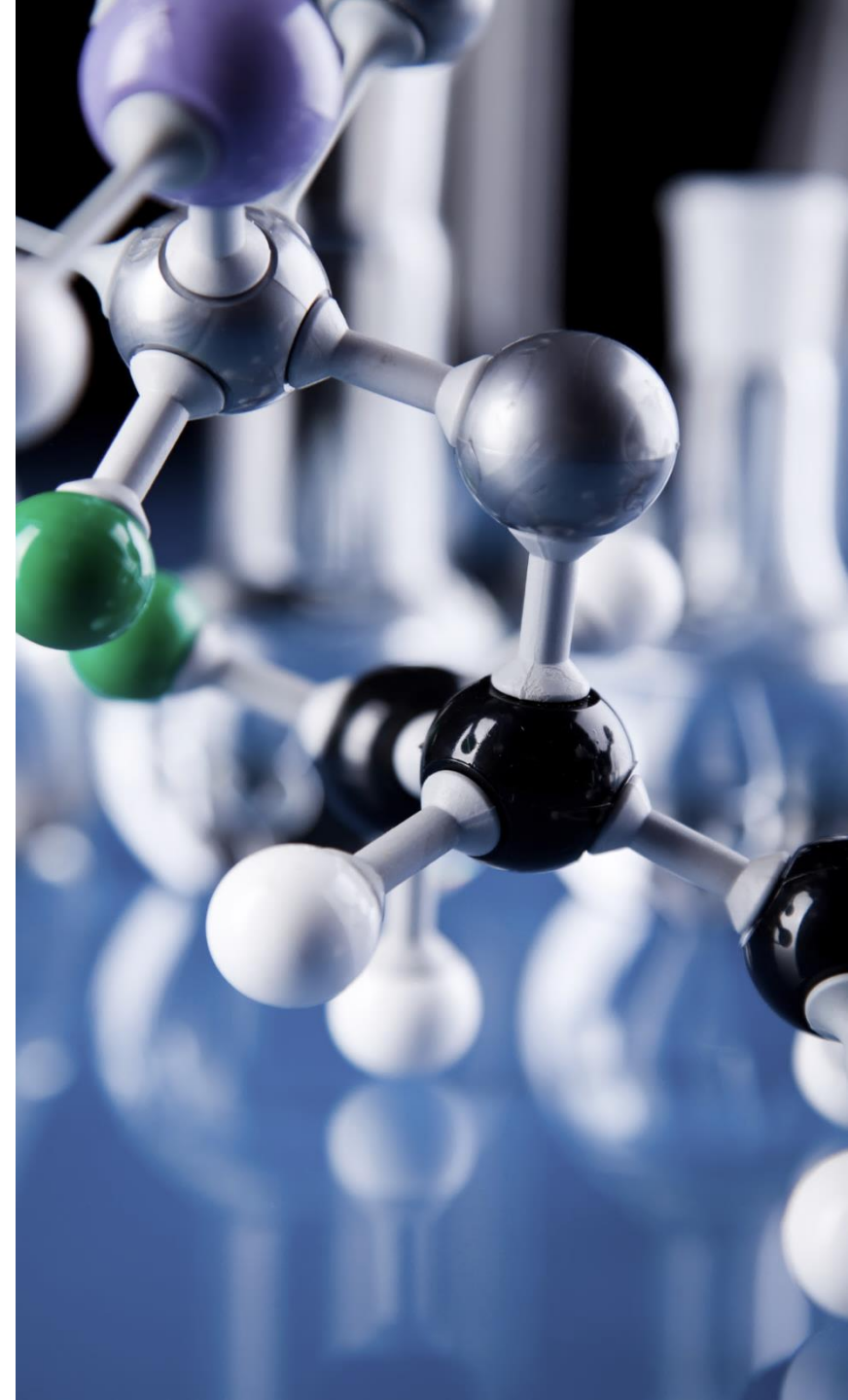


Regular Maintenance Tasks To Prevent Equipment Breakdowns.

PREDICTIVE MAINTENANCE



Using Data And Analytics To Predict Potential Issues Before They Occur, Reducing Unexpected Failures.



MAINTENANCE STRATEGY



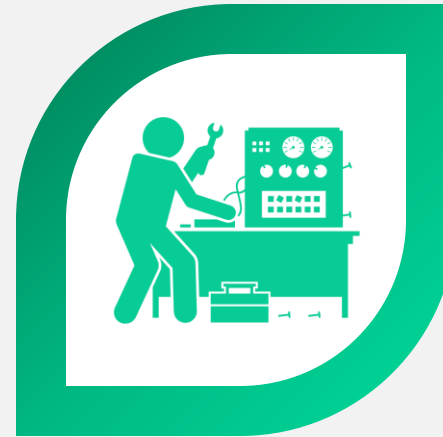
WHY PREVENTIVE MAINTENANCE?

- Proactively Addresses Minor Issues Before They Become Major Problems.
- Keeps Equipment Running At Optimal Performance.
- Reduces Unexpected Downtime And Costly Repairs.



WHY PREDICTIVE MAINTENANCE?

- Leverages Real-time Data (Temperature, Vibration, Pressure) To Identify Issues Before They Affect Operations.
- Maximizes Equipment Lifespan And Minimizes Unplanned Stoppages.



SKF PULSE – OUR SMART MAINTENANCE TOOL



WHAT IS SKF PULSE?

A Tool That Helps Us Monitor Machines Through **Vibration** And **Temperature** Sensors.



BENEFITS



Quick Detection

Identifies Potential Problems And Their Severity.



Prevention

Enables Us To Take Action Early, Avoiding Breakdowns.



Ease Of Use

No Need For Specialized Expertise, Making Maintenance More Accessible For Our Team.



PREVENTIVE VS PREDICTIVE MAINTENANCE



PREVENTIVE MAINTENANCE

- Scheduled Inspections And Fixes Based On Time Or Usage.
- Helps Avoid Unexpected Breakdowns.



PREDICTIVE MAINTENANCE

- Uses Advanced Data To Forecast Potential Issues.
- Allows Us To Make Adjustments Before Failure Occurs.



OUR FIRST FOCUS – PUMP MAINTENANCE



INITIAL FOCUS

Pumps Will Be The First Equipment To Undergo For Predictive And Preventive Maintenance.



KEY DATA TRACKED

Temperature, Pressure Vibration, And Oil Levels.

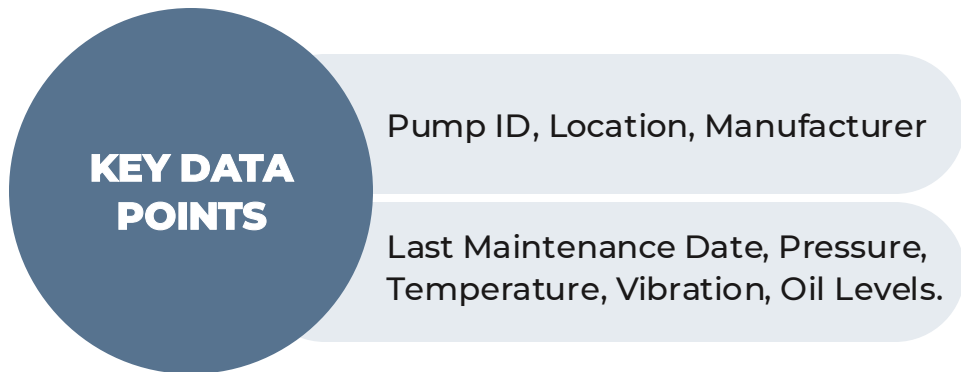
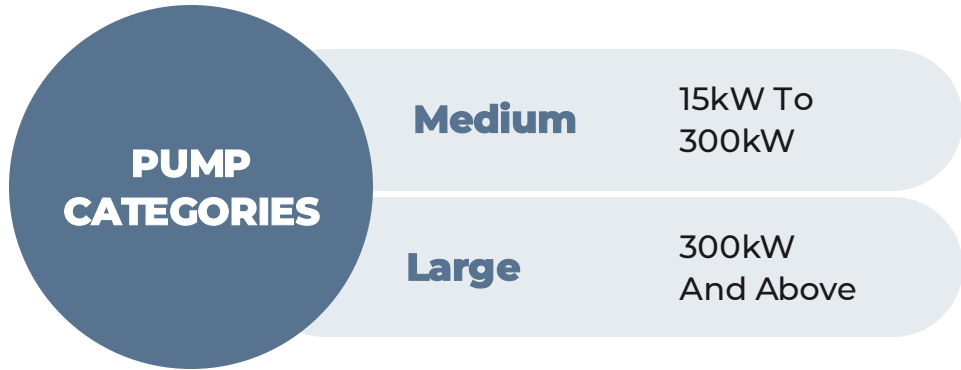


NEXT STEPS

Expand To Compressors, Motors, And Other Critical Machinery.



DATA TRACKED FOR MAINTENANCE



DATA POINT	EXAMPLE/DETAILS
Pump ID	12345
Location	Facility A
Manufacturer	BCCI-JO
Last Maintenance Date	01-12-2014
Pressure	150 PS
Temperature	75°C
Vibration	Low
Oil Levels	Optimal

HOW DATA IMPROVES OPERATIONS?



EARLY DETECTION

Predict Problems Before They Happen.



COST EFFICIENCY

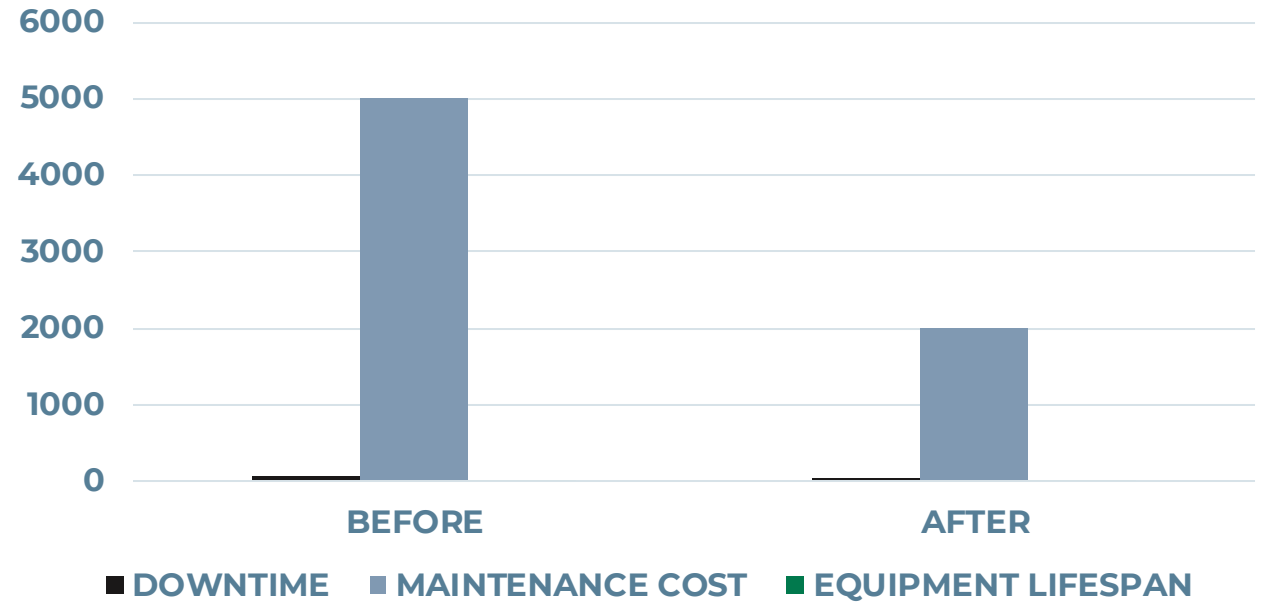
Reduces maintenance costs by preventing major failures.



EXTENDED EQUIPMENT LIFESPAN

Ensures longevity through regular checks and early interventions.

Graph showing improvements in performance after predictive maintenance implementation



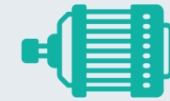
EXPANDING MAINTENANCE COVERAGE

AFTER PUMPS

We Will Expand To Other Critical Equipment Such As Compressors, Motors, Fans And Gearboxes.



Compressors



Motors



Fans



Gearboxes



LONG-TERM GOAL

Implement Full Predictive Maintenance Across The Plant To Ensure Efficiency And Reliability At All Levels.



NEXT STEPS



PHASE 1

Focus On Pump Maintenance And Data Collection



PHASE 2

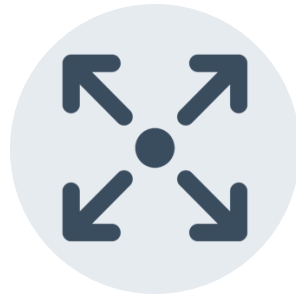
Expand To Compressors, Motors, And Other Key Equipment.



Achieve full predictive maintenance across the plant for all critical machinery.



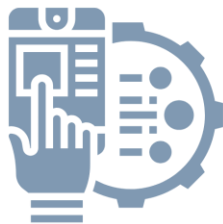
PHASE 1



PHASE 2



GOAL





THANK YOU

Feel Free To Ask
Any Questions.

We're excited to
continue working
together towards a
more efficient
future.

